

Does MicroSolv have an equivalent vial to the Waters Total Recovery vial? - FAQ

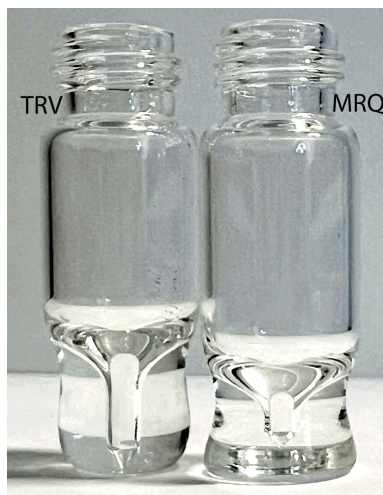
The MicroSolv MRQ™ vials are designed for the same autosamplers as the Waters© Total Recovery Vial. However, this is not an exact match. The Total Recovery Vial is indicated for use when the HPLC or GC autosampler has an injection needle with a side port. The MicroSolv™ MRQ vials are made for when the autosampler has an injection needle with a bottom inlet or port.

The MRQ vials hold a little more liquid and have additional headspace. Both vials have the same style Well for maximum recovery of sample, both have the exact same 12 x 32 mm outer dimensions and screw threads, that are 9-425 mm. Both vials work very well with our caps. The base of the MRQ vial is a bit more stable due to its wider platform, however it fits perfectly into autosampler wells.



Click [HERE](#) to view more details on the MRQ vials.

Below is a "rough" photograph for comparison purposes only, of both the Total Recovery Vial (TRV) and an MRQ Vial. Note that the MRQ Vial has a larger total volume and a smaller bottom well. The TRV has a longer well and terminates much lower in the vial than the MRQ.



Printed from the Chrom Resource Center

Copyright 2025, All Rights Apply

MicroSolv Technology Corporation

9158 Industrial Blvd. NE, Leland, NC 28451

Tel: (732) 380-8900

Fax: (910) 769-9435

Email: customers@mtc-usa.com

Website: www.mtc-usa.com